



Requirements Engineering Magic

Practical Application of Systems Engineering Alchemy

Tim Wiseley, Sandia National Laboratories

Kent de Jong, University of Maryland and
Sandia National Laboratories (retired)



Requirements Engineering Magic

Practical Application of Systems Engineering Alchemy

Tim Wiseley, Sandia National Laboratories

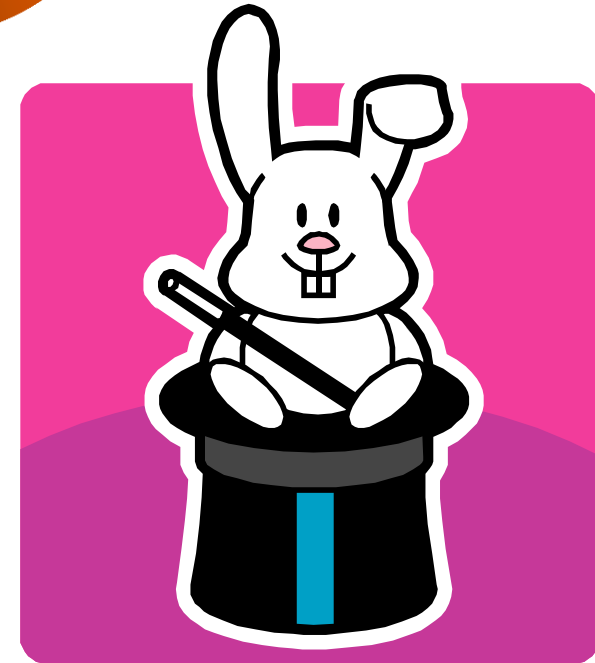
Kent de Jong, Treasurer, INCOSE-Chesapeake Chapter

Background

- What is requirements engineering?
- Our project effort coincident with ISO standard
- Most engineers avoid developing requirements

How do we develop well written, high quality requirements?

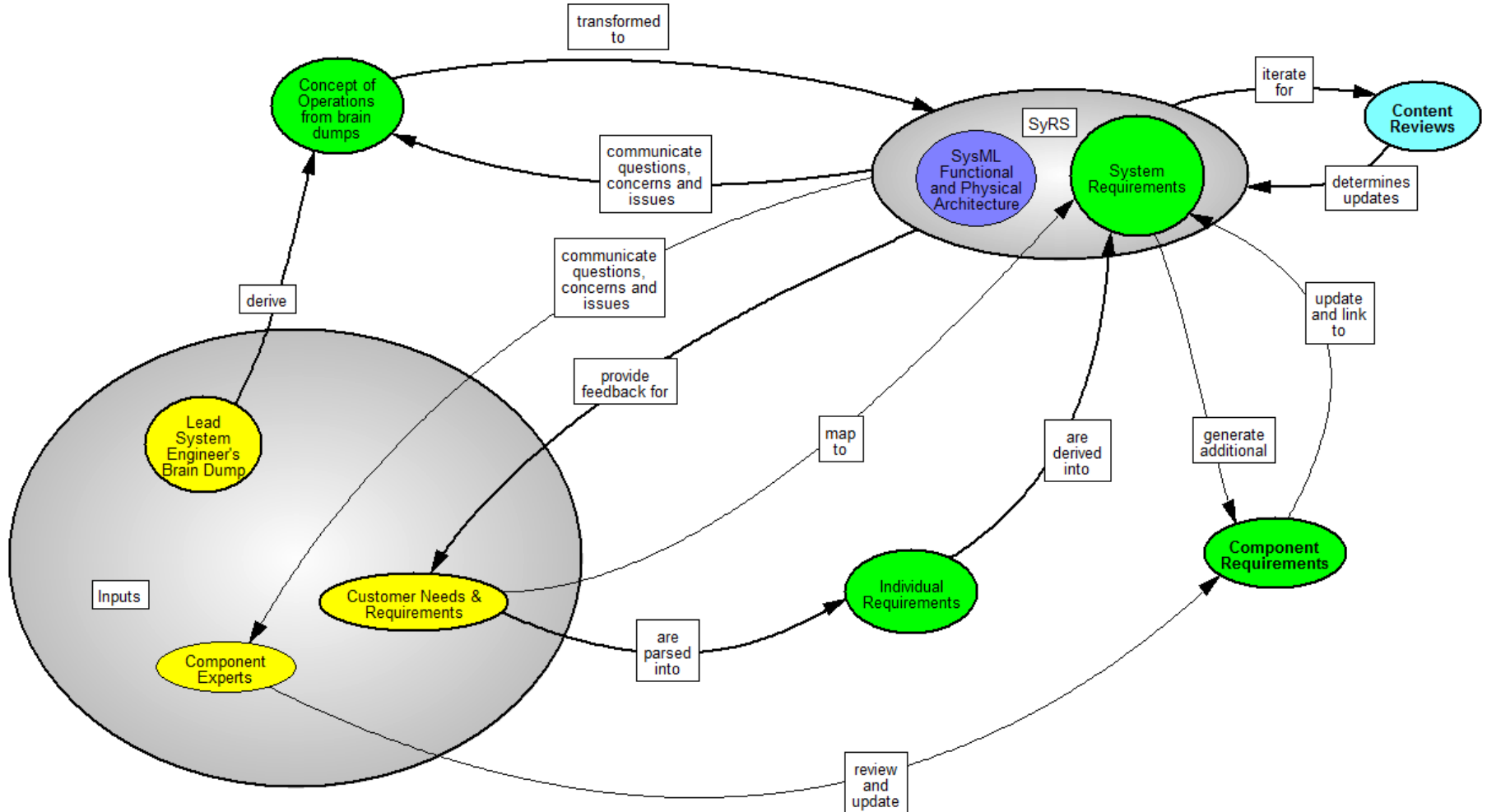
Magic



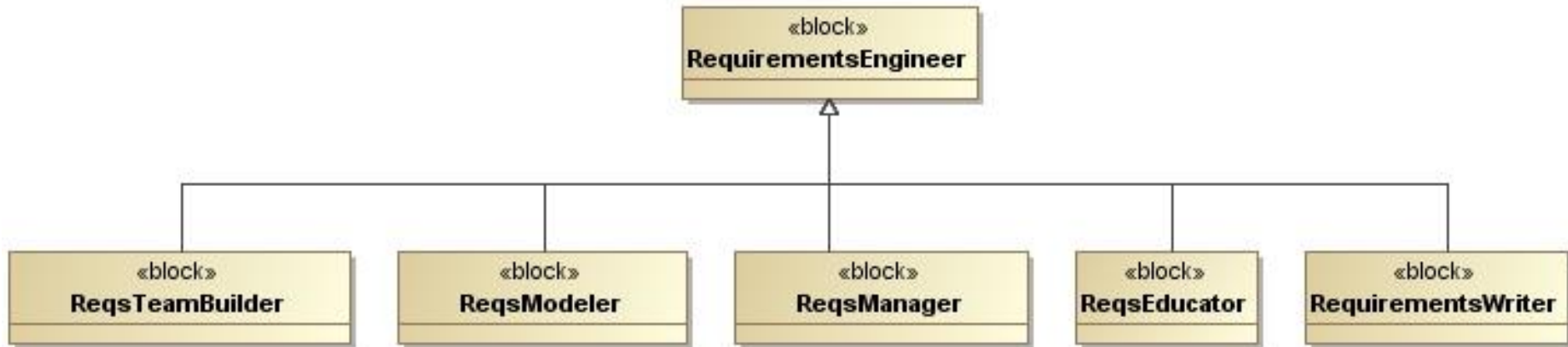
How to Make Magic

- Tailor, create RE process working for project
- Model to develop better requirements
- Teaming for requirements engineers

A Tailored Process

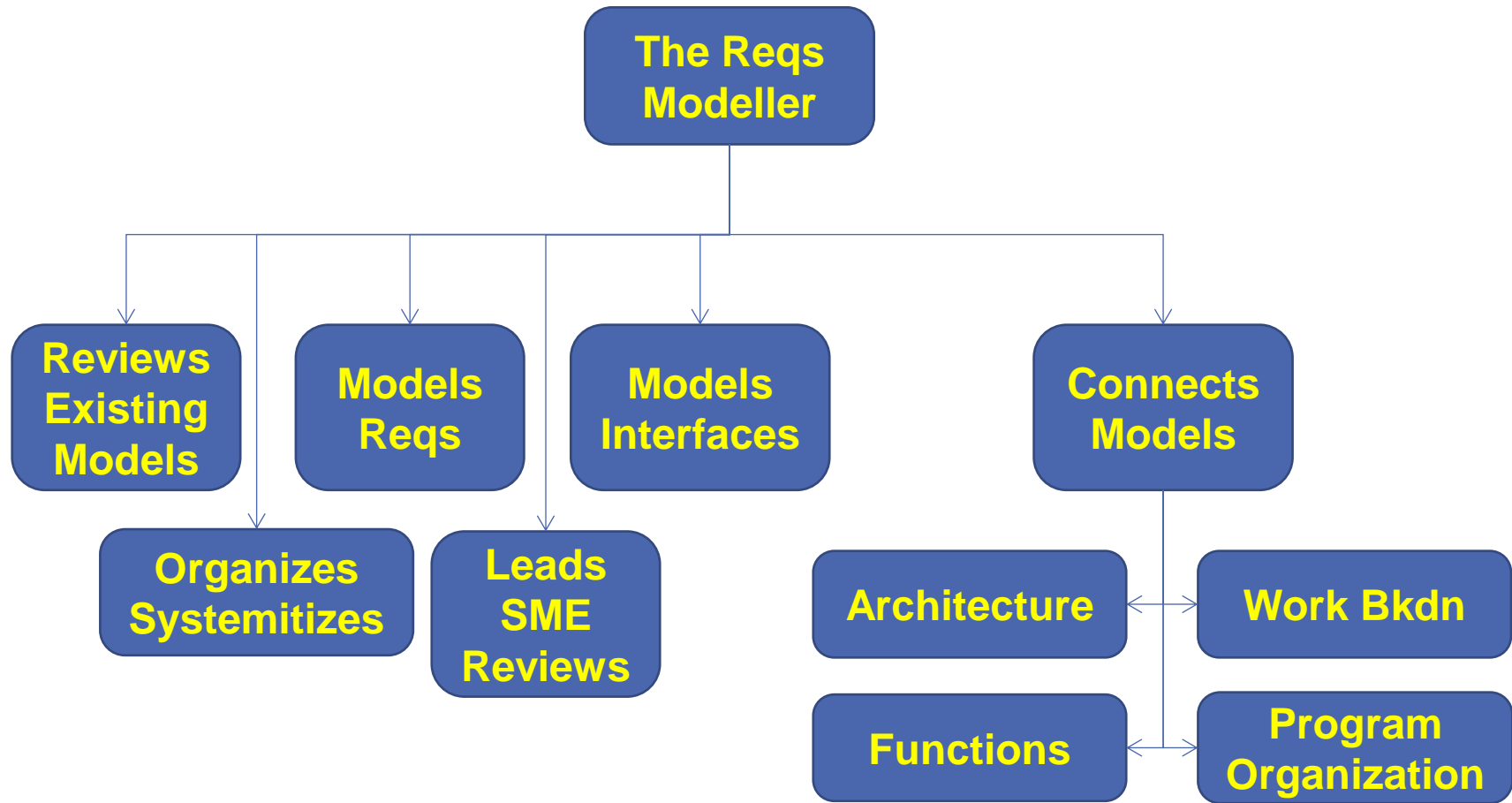


Requirements Engineering Roles



The Helpful Requirements Author

- Asks “Why”
- Understands problem domain
- Uses operational concepts
- Furnishes rationale
- Includes verification method & strategy



Requirements Team Building

- Gather groups of experts, elicit requirements
 - Build teams dedicated to good requirements
- Small requirements authoring team
 - 2 people
 - More productive than single requirements engineer
 - Mentoring new requirements engineers
- Teaming & uncertainty

System Engineering Alchemy

- Requirements engineering, a TEAM effort
- Tailor existing process, discover RE roles
- Modeling helps develop good requirements



Questions?



Our Contact Information

- Tim Wiseley
 - Sandia National Laboratories
 - thwisel@sandia.gov
- Kent de Jong
 - University of Maryland
 - kdejong@umd.edu
 - kent.dejong@incose.org